



## **BEACONSFIELD YACHT CLUB**

26 Lakeshore Road Beaconsfield, P.Q.

H9W 4H3

Tel: (514) 695-1272

Fax:(514) 695-9794

### **Club Championship - Saturday, October 1<sup>st</sup>, 2022**

#### **Sailing Instruction**

##### **1. Rules**

- 1.1. The races will be governed by the rules as defined in The Racing Rules of Sailing.
- 1.2. The S.L.V.Y.R.A. handicap rules.
- 1.3. Yachts shall have their correct sail numbers displayed on their mainsail and genoa in order to be scored, or the Race Committee is advised in writing of the discrepancy prior to racing.

##### **2. Entries**

- 2.1. This event is open to all competitors.
- 2.2. No carry over points.
- 2.3. An eligible yacht is one that is helmed by a yachtsman in good standing of the Beaconsfield Yacht Club, and a yacht that has a valid S.L.V.Y.R.A.
- 2.4. The event will be sailed using the member's own boat and scored using SLVYRA handicaps
- 2.5. There will be a white sail and spinnaker fleet, with two separate starts.

### **3. Notices to Competitors**

- 3.1. Notices to Competitors will be posted on the official notice board located on the veranda of the club.

### **4. Changes to Sailing Instructions**

- 4.1. Any change to the Sailing Instructions will be posted on the official notice board of the club before 10:00 a.m.

### **5. Schedule of Races**

- 5.1. The scheduled time for the first warning signal will be 11:00 a.m.
- 5.2. Three races are scheduled for this event
- 5.3. A minimum of one race completed the day of the championship racing shall constitute its completion. If no racing is completed, racing may be re-scheduled.

### **6. Marks and Starting/Finishing Line**

- 6.1. Inflatable drop marks will be used.
- 6.2. The race committee boat will form one end of the starting and finishing line.

### **7. The Start and Class Flags**

- 7.1. The starting and finish line will be between the mast of the race committee boat displaying an RC flag at the starboard end of the line and the starting mark at the port end.
- 7.2. Spinnaker fleet will be a purple flag and will start first
- 7.3. White sail fleet will be a white flag. The start will be after the spinnaker start
- 7.4. Start sequence: Five (5) minutes count down start. Spinnaker fleet starts first and white sail count down five (5) minutes after the spinnaker fleet start.

### **8. Time Limit**

- 8.1. Boats failing to finish within 30 minutes after the first boat sails the course and finishes will be scored Did Not Finish (DNF) without a hearing. This changes Rule 35.

### **9. Protests**

- 9.1. Protests must be filled on the BYC online protest form: [Protest Form](#), and submitted before 17:00 (same day). Protests will be heard as soon as possible after the expiry of the time limit of 17:00.

- 9.2. Hearings will be held in the board room of the club in the week following the championship.
- 9.3. Notices of protests by the race committee will be posted to inform boats under rule 61.1(b).

## 10. The Course

10.1. Three (3) races will be run back-to-back for each fleet

10.1.1. **Spinnaker fleet:** dropped marks will be used. Sausage course, two courses will be available to the RC

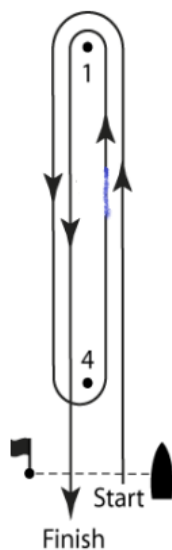
10.1.2. Course #1 (Start-1-4-1-Finish)

10.1.3. Course #2 (Start-1-Finish)

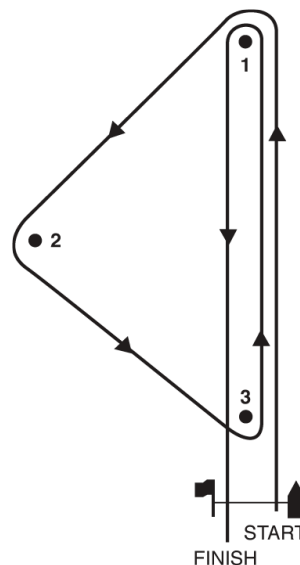
10.1.4. **White sail fleet:** Dropped marks will be used. Triangle course, two course will be available to the RC

10.1.5. Course #1 (Start-1-2-3-1-Finish)

10.1.6. Course #2 (Start-1-2-Finish)



**Spinnaker course**



**White sail course**